

Shiga
kogen

POWDER EXPRESS



Yudanaka ⇌ Shiga Kogen (Sun Valley)

Bus ticket for Round-trip

* You can board the bus from any bus stop for the Nagaden buses operating between Yudanaka Station and Snow Monkey Park.

Operation period

2023. 12/2 sat → 2024. 4/1 mon

Round Trip Fare

Adult

 Child^{※1}

Online ticket price

1,200yen • 500yen

Adult

 Child^{※1}

 Purchase on board^{※2}

1,500yen • 500yen

If you are not sure about driving cars in snow conditions, there are free parking lots at the ROMAN MUSEUM (snow monkey park bus stop).



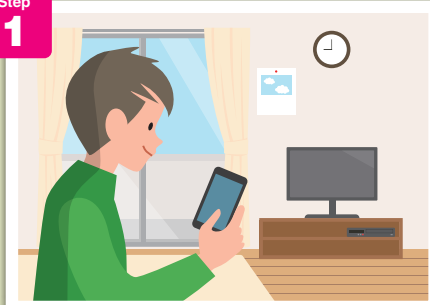
It can be used at each bus stop between "Yudanaka Sta." and "Snow Monkey Park".

- ※1 For children aged 1 – less than 6, there is no charge for one for each accompanying adult. Beginning with the second child, the children's fare is charged. There is no charge for children aged less than 1.
- ※2 Please purchase it from the driver when you get off the bus.
- ※ On the express bus, the only stops are Snow Monkey Park and within Shiga Kogen. This ticket does not entitle passengers to ride an express bus to Nagano Station.

First, purchase a ticket from the website.

How to use the Powder Express Ticket

Step 1



Purchase a digital ticket in advance through the ticket sales **website!**

Step 2



On the bus, show the digital ticket screen on your smartphone to the bus driver.

Step 3



On the return bus, (for Yudanaka Sta.) show the digital ticket screen on your smartphone to the bus driver.

- [Notes]
- Guests who are staying at Yudanaka or Shibu Onsen may board the bus at the nearest bus stop.
 - Please be careful when boarding the express bus with your ski boots on, as the floor may be wet and slippery.
 - If you bring your skis or snowboards on the Express Bus, they may be damaged during loading/unloading or in the trunk during the trip.
 - ShigaKogen Mountain Resort will not be responsible for any accidents or theft while on the bus or in the Parkig lot.

Purchase tickets here. >>>

WAmazing